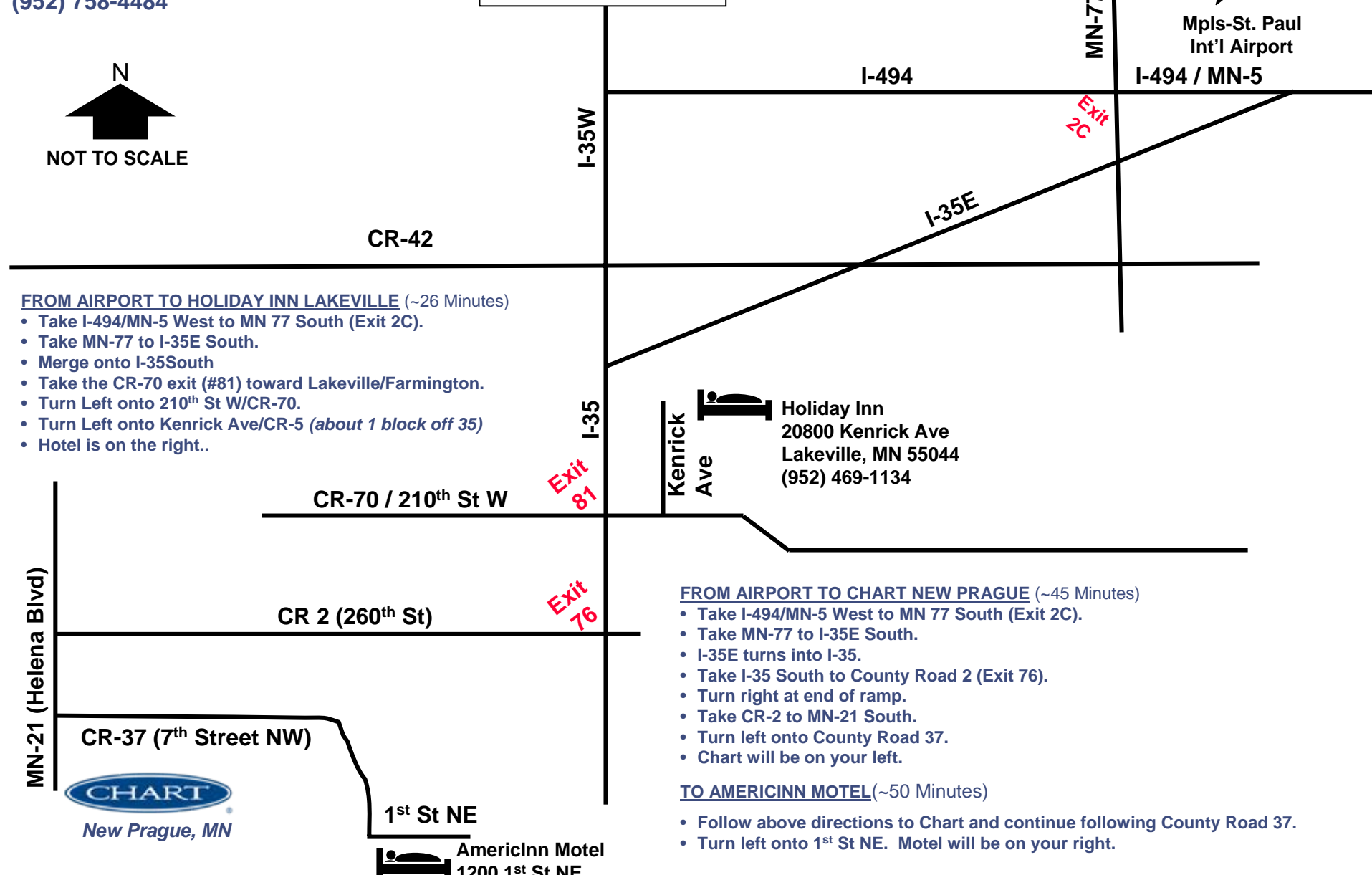
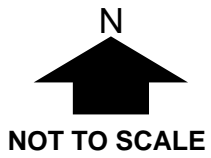


**Chart Industries, Inc.**  
**407 7<sup>th</sup> Street N.W.**  
**New Prague, MN 56071-1000**  
**(952) 758-4484**



**Mpls-St. Paul  
 Int'l Airport**



**FROM AIRPORT TO HOLIDAY INN LAKEVILLE (~26 Minutes)**

- Take I-494/MN-5 West to MN 77 South (Exit 2C).
- Take MN-77 to I-35E South.
- Merge onto I-35South
- Take the CR-70 exit (#81) toward Lakeville/Farmington.
- Turn Left onto 210<sup>th</sup> St W/CR-70.
- Turn Left onto Kenrick Ave/CR-5 (about 1 block off 35)
- Hotel is on the right..

**Holiday Inn**  
 20800 Kenrick Ave  
 Lakeville, MN 55044  
 (952) 469-1134

**FROM AIRPORT TO CHART NEW PRAGUE (~45 Minutes)**

- Take I-494/MN-5 West to MN 77 South (Exit 2C).
- Take MN-77 to I-35E South.
- I-35E turns into I-35.
- Take I-35 South to County Road 2 (Exit 76).
- Turn right at end of ramp.
- Take CR-2 to MN-21 South.
- Turn left onto County Road 37.
- Chart will be on your left.

**TO AMERICINN MOTEL (~50 Minutes)**

- Follow above directions to Chart and continue following County Road 37.
- Turn left onto 1<sup>st</sup> St NE. Motel will be on your right.

**CR-37 (7<sup>th</sup> Street NW)**



**AmericInn Motel**  
 1200 1<sup>st</sup> St NE  
 New Prague, MN  
 (952) 758-7300